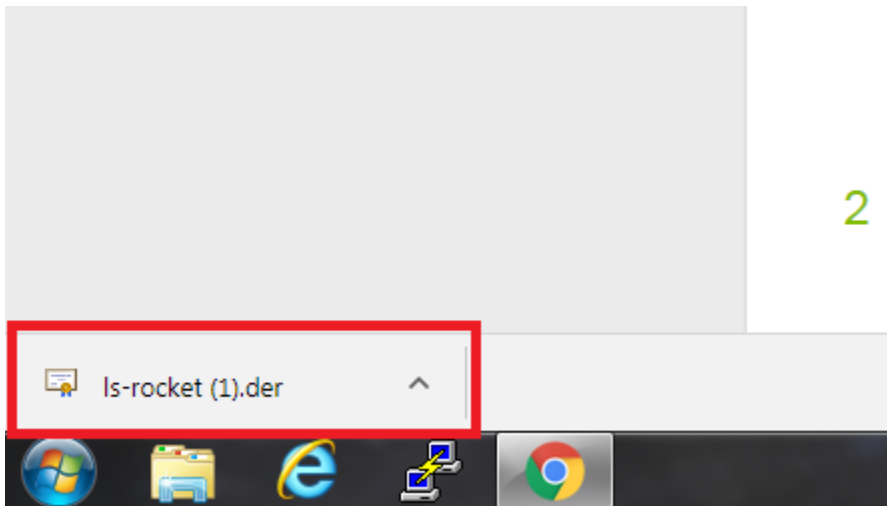
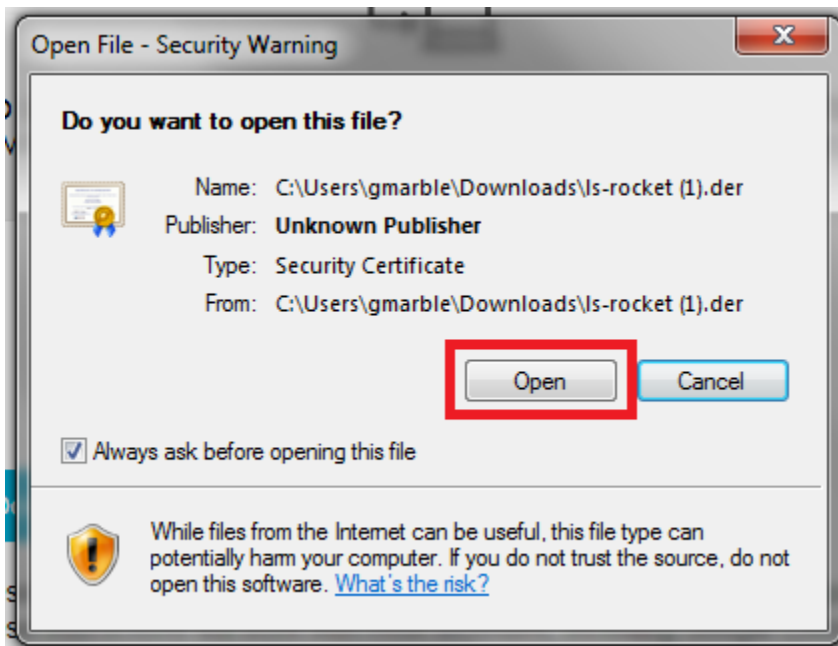


## Reconnecting to Lightspeed for Google Chrome and Windows

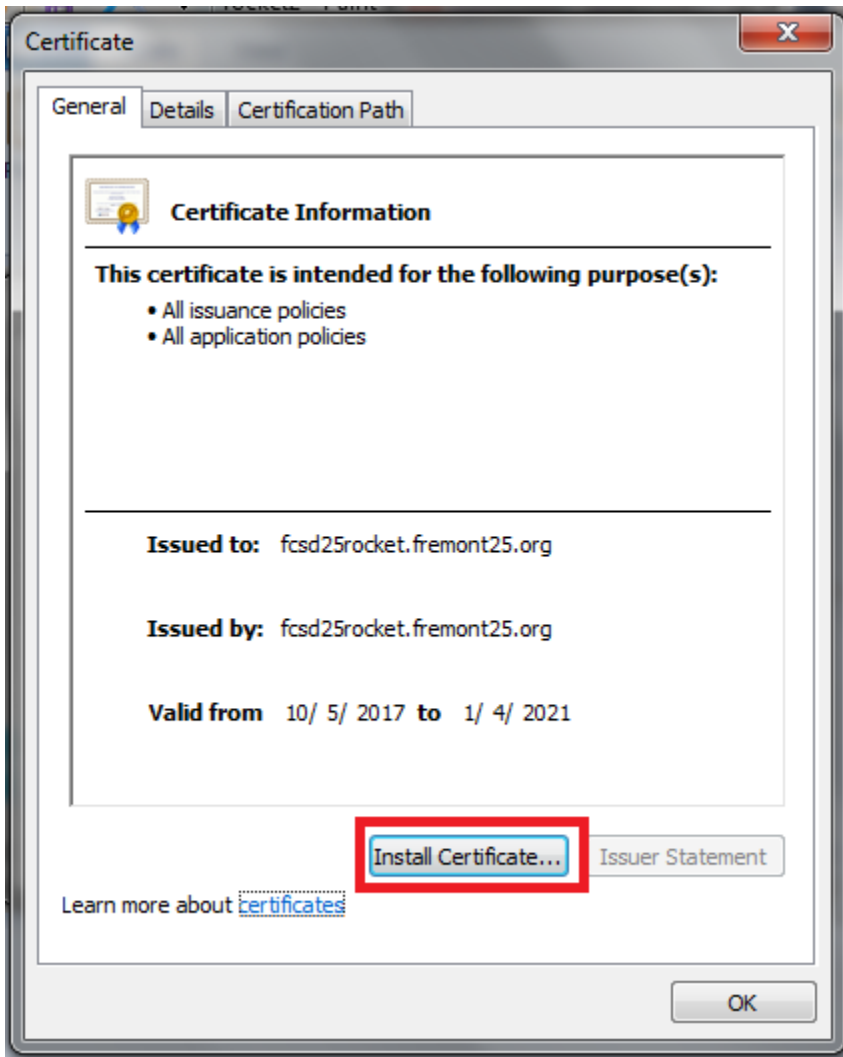
1. [Click here to download the Lightspeed certificate file](#)
2. When the file is downloaded, click on the file on the bottom of Chrome to open it:



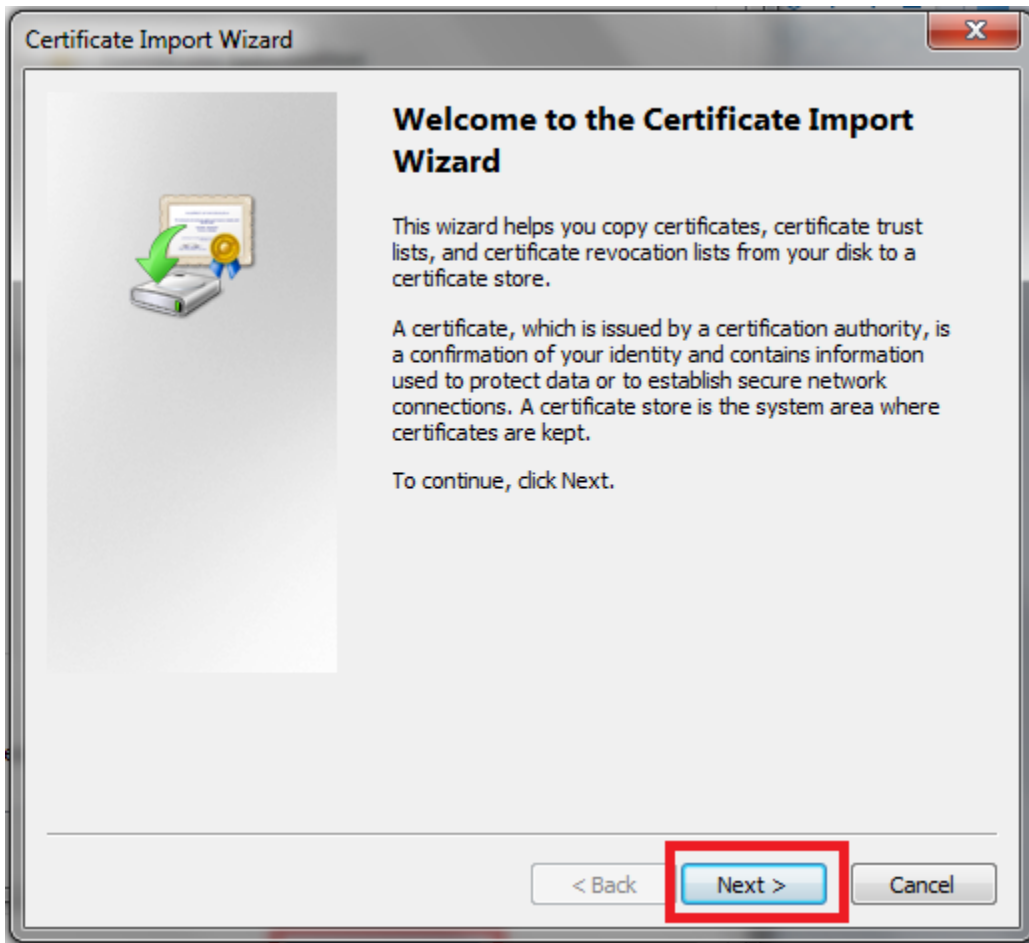
3. You will then be prompted to open the file, click on open:



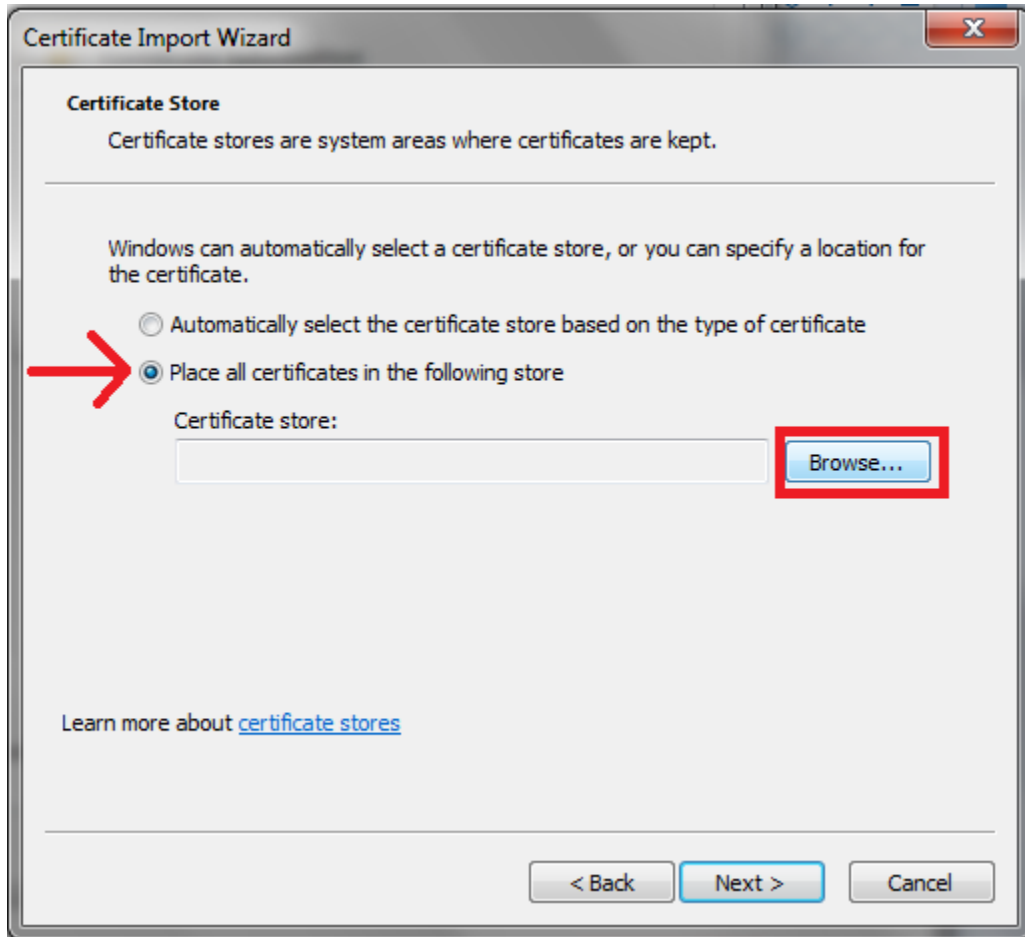
4. On the certificate page that opens up, click on "Install Certificate"



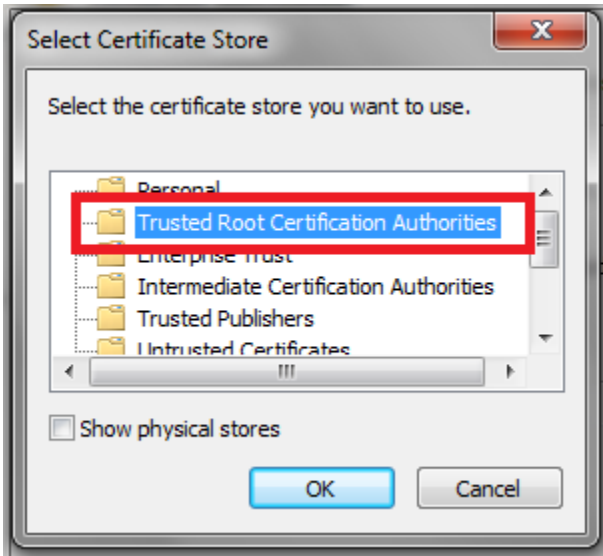
5. On the Certificate install wizard page, click on “Next”



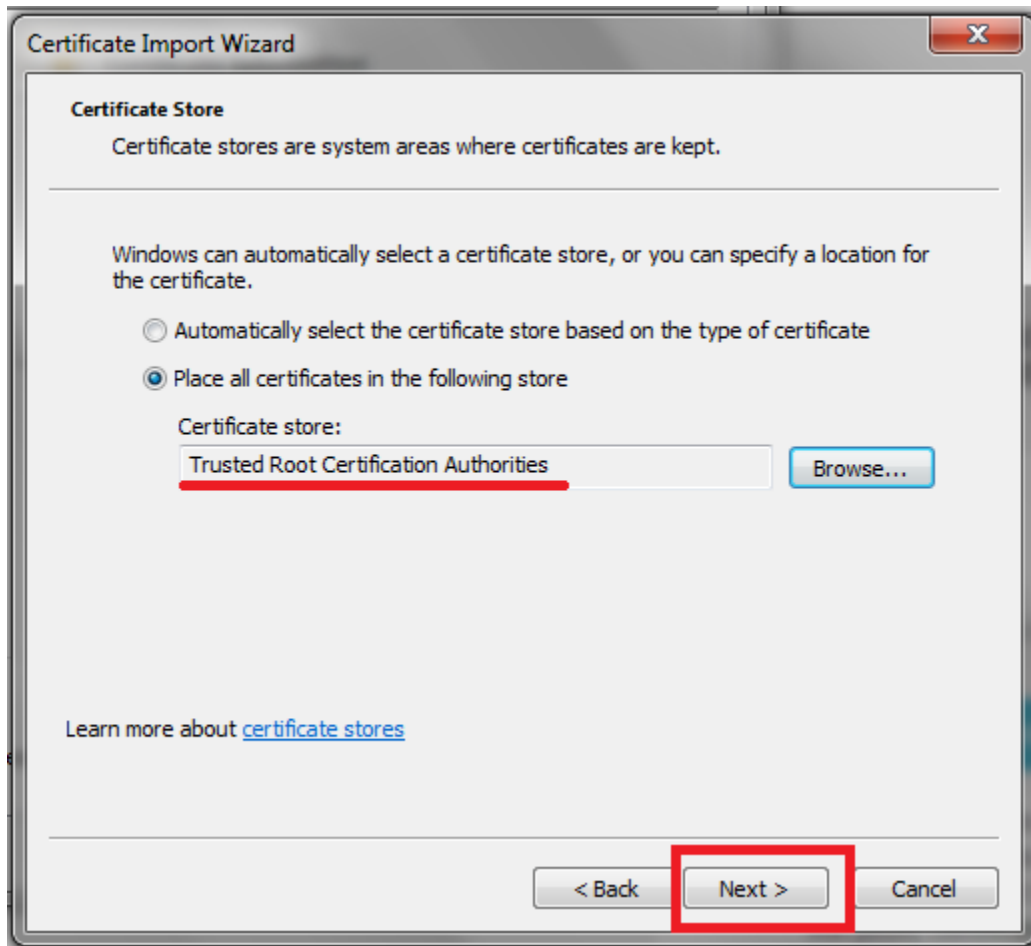
6. Now select the option "Place all Certificates in the following store" and then click on the "Browse" button



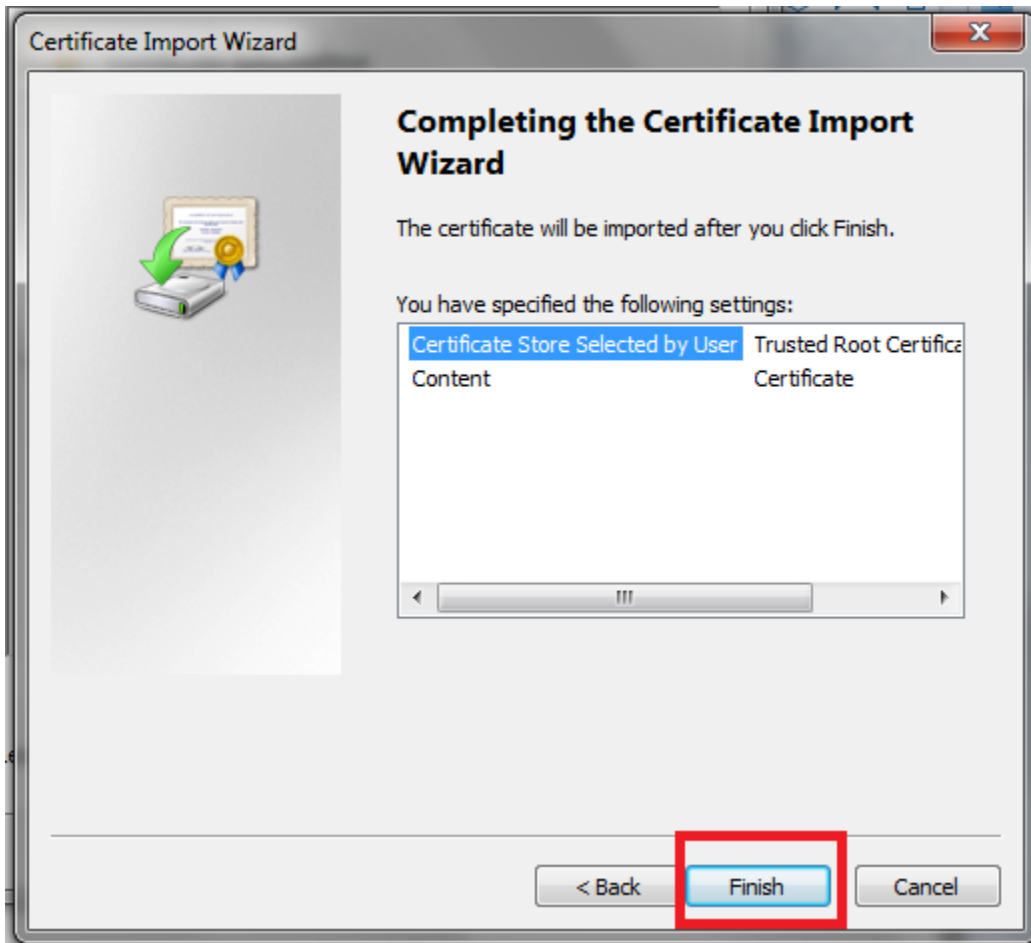
7. Now select the folder "Trusted Root Certification Authorities" and select "Ok"



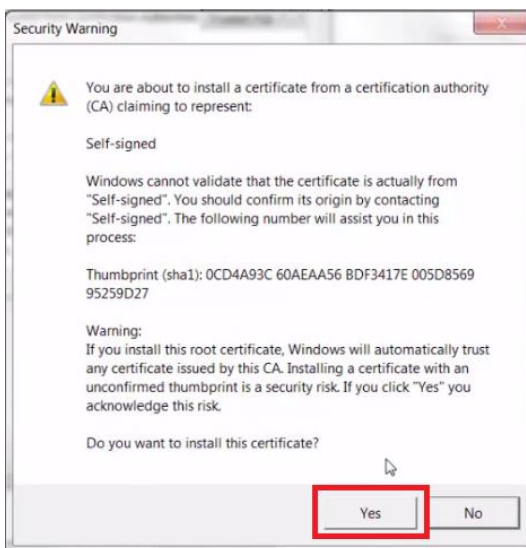
8. Back on the import wizard screen, make sure that "Trusted Root Certification Authorities" is listed as the Certificate Store and then click the "Next"



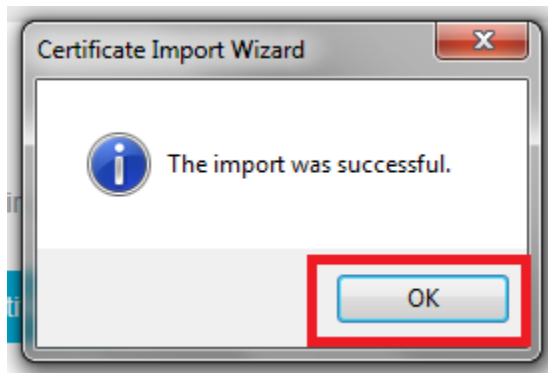
9. You will now be on the “Completing the Certificate Import” page. Simply click “Finish”



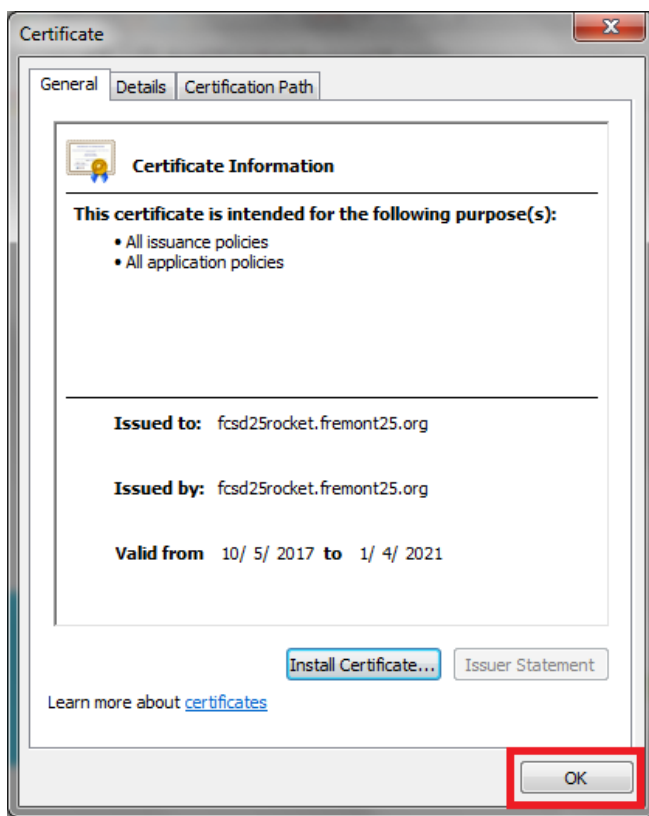
10. You will then see a popup with a security warning. Click “Yes” here



11. You will now get a popup saying the import was successful. Click on “Ok”



12. Back on the Certificate window, simply click “Ok”



13. Finally, **Close your Google Chrome Browser** and reopen it. You will now have access to Gmail and other secure sites